



Life-Cycle

Tech sheet and information
Updated 25-01-2025

TYPE OF PRODUCTION : Acrobatic movement theater and new magic

TYPE OF VENUE: Theater

RUNNING TIME: Approximately 50 minutes

MAXIMUM AUDIENCE: 350 spectators

AUDIENCE: All ages (6 and up.)

CAST AND CREW: 1 performer, 1 stagehand/puppeteer, 1 technical director and 1 technician
(to be confirmed)

TECHNICAL DIRECTOR: Coralie Cloutier (coralie@dynamotheatre.qc.ca)

THE PRESENTER HEREBY UNDERTAKES AND AGREES AS FOLLOWS :

1. To ensure that a responsible person (technical representative of the presenter) is on site at all times;
2. To provide a minimum playing space of :
Width: 25' (7.6 m) at the portal - a minimum space of 1.5m (5') backstage.
Depth: 25' (7.6 m);
Clear height: 17' (5.18 m).
Inform DynamO Théâtre if the stage floor is made up of risers and/or is not level.
3. To provide five (5) people to help with unloading, loading, load-in and load-out. We require one (1) sound technician, two (2) lighting technicians and two (2) stagehands. Please note that duties may change according to production needs;
4. To allow a minimum set-up time of eight (8) hours (depending on the type of venue and the technical crew) the day before the show to unload the truck, put up the set, adjust the lighting and set the lighting and sound levels. Allow an extra two hours if the lighting cannot be pre-hung.
5. The call for the show is two (2) hours including the warm-up of the performers before each performance;
6. To allow three (3) hours after the show for striking the set and load the truck. Please let us know if access to the stage is easy;
7. To provide sound and lighting equipment.
8. To provide a clean, heated dressing room for two (2) people, with mirrors, toilets, running water and showers, close to the stage;



9. To provide access to water (avoid plastic bottles) so that the team can fill their reusable bottles. Small healthy snacks and beverages (juices, coffee, teas, etc.) are appreciated.
10. To provide parking for one 16' truck and one car;
11. To provide the theater and stage plans (at least twelve (12) weeks prior to first performance).
12. To turn off ventilation (house and stage) during the show (indoor kite act that requires no stray drafts).
13. To ensure total darkness during the shows.

TECHNICAL SPECIFICATIONS

A) Set

The set consists of a wooden desk, a bicycle, a 7.6M (25') X 7.9M (26') dance floor and a 5.5M (18') by 7.3M (24') hanging grid. The hanging grid weighs 700 lbs. It is suspended by chain hoists at 6 points. (4 corners and 2 in the center.) Ideally, the venue should supply the 6 chain hoists with 15' of chain. This grid can be suspended by textile straps directly from the theater's fly. In this case, it will be hung from 9 points on 3 different pipes (preferable whenever possible).

B) Lighting

We will have our own ETC Nomad lighting console (DMX protocol, 2 universes).

We will bring 6 Par LED zoom RGB.

The company will provide all color filters for the projectors.

Here is the equipment to be provided by the venue:

List of equipment required for the show:

- 53 dimmers 2.4 kw or 77 dimmers 2.4 kw if no LED for the backdrop and top
- 20 floor circuits or 32 floor circuits if no LED for the backdrop
- 34 ceiling circuits or 45 ceiling circuits if no LED ceiling
- One optosplitter (several LED spotlights)
- 8 x 6' booms
- 4 x 10' pipes with cheeseborough/keyclamp to connect 2 booms together.
- Haze machine

List of conventional spotlights	List of LED projectors :
9 Lekos ETC Source 4 25/50° 575w 17 Lekos ETC Source Four 26° 575W 20 Lekos ETC Source Four 36° 575W 7 Pars 64 medium	6 ChromaQ or 6 LED bars (or 4 iris 3 cells) 6 Par LED

The generic lighting plot is at the end of our data sheet.



B) Lighting (continued)

Pre-hanging is required the day before the set-up date. If pre-hanging is not possible, add 2 hours before the arrival of the technical crew, or an additional 2 hours to the set-up day.

C) Sound

The show is conducted using a computer supplied by the company (QLAB with stereo sound card, ¼" jack).

Sound equipment supplied by the venue: We require a 3-way sound system (PA and sub) and a pair of monitors on stage.

D) Control room

The control room must be located in the house, in a position suitable for running the show. The company's technical director will operate the sound and lighting.

E) Curtains

Germany only, (remove all legs and borders). If impossible, to be discussed with the person in charge of the show (Coralie Cloutier).

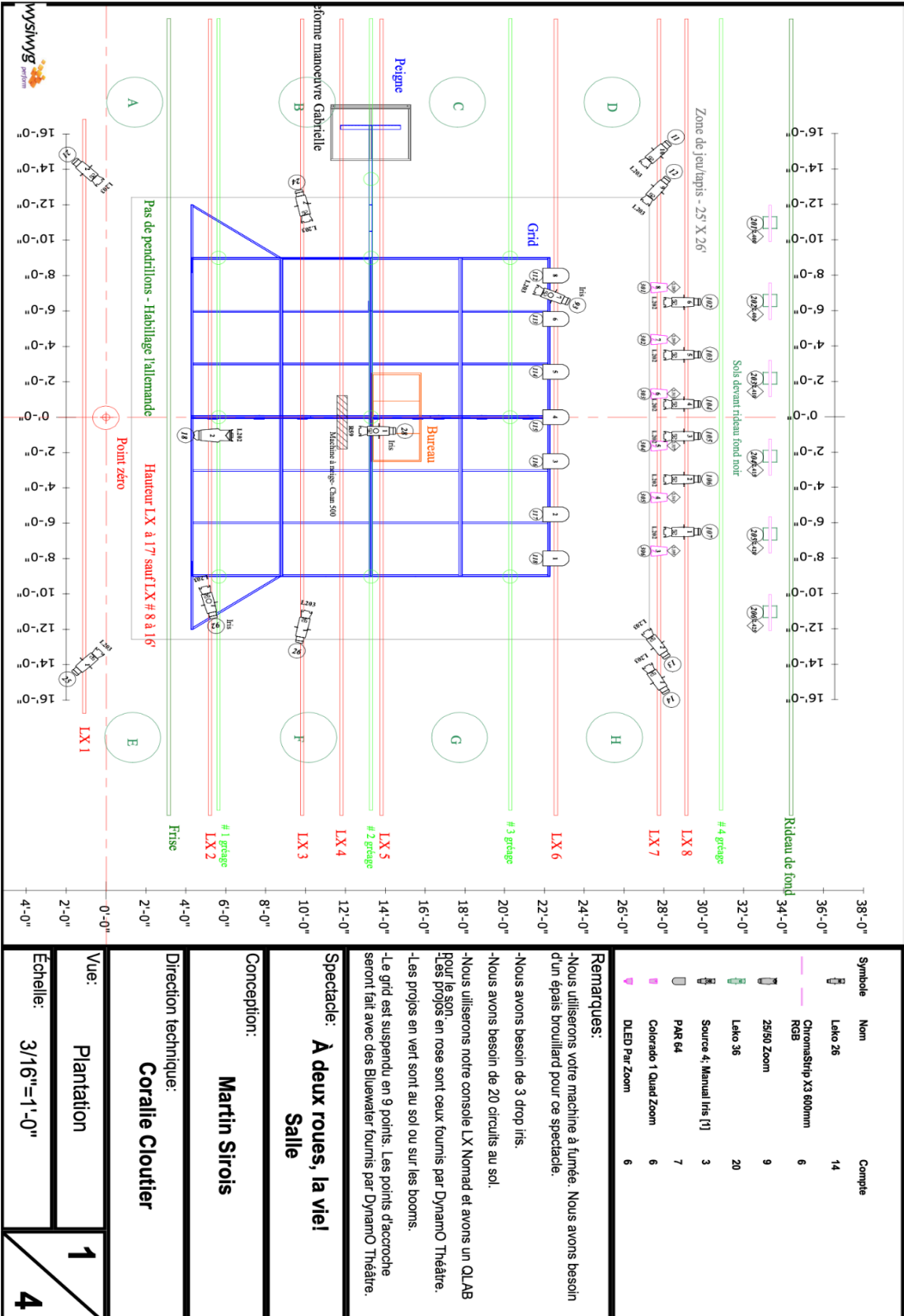
We also need a black backdrop.

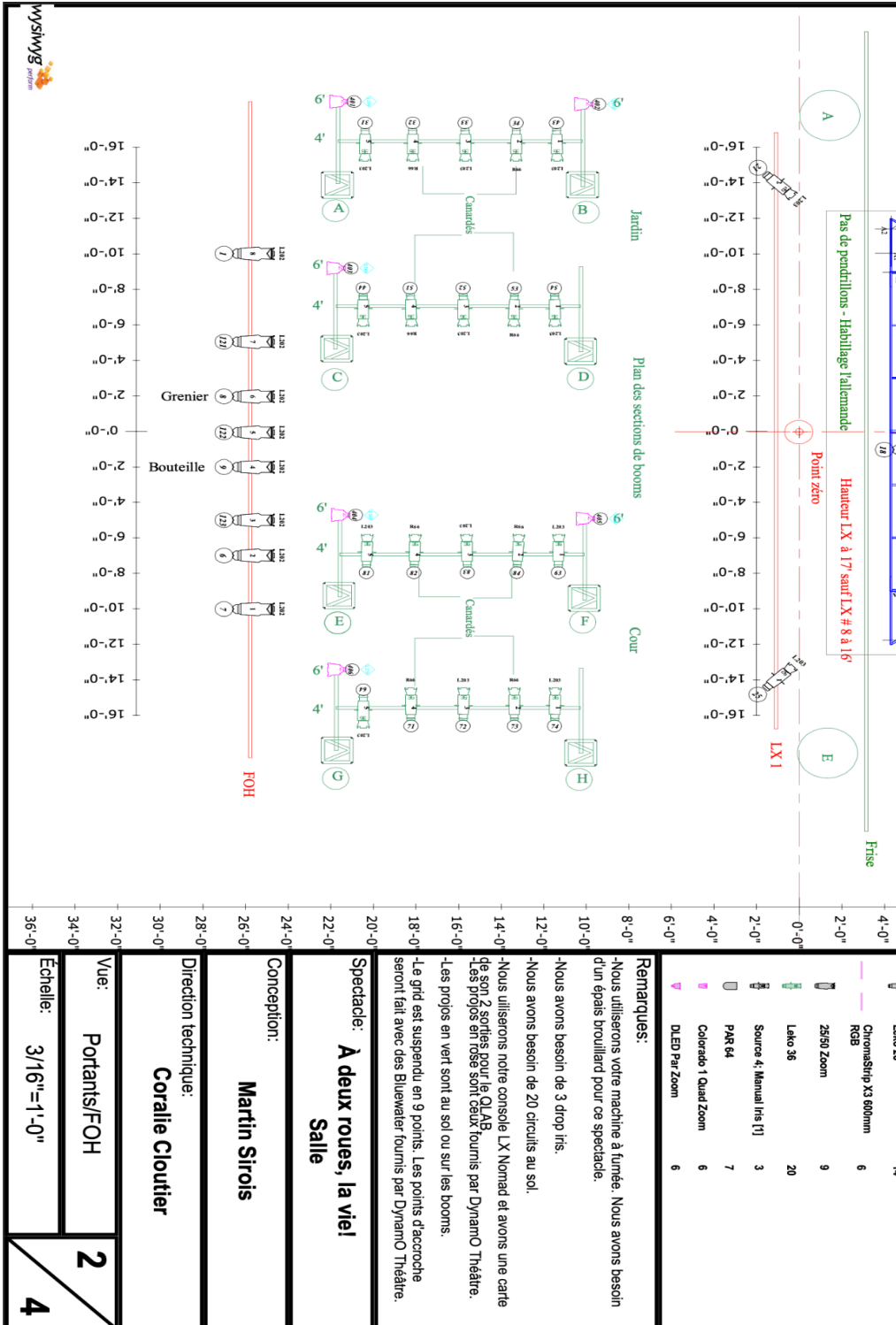
F) Unloading

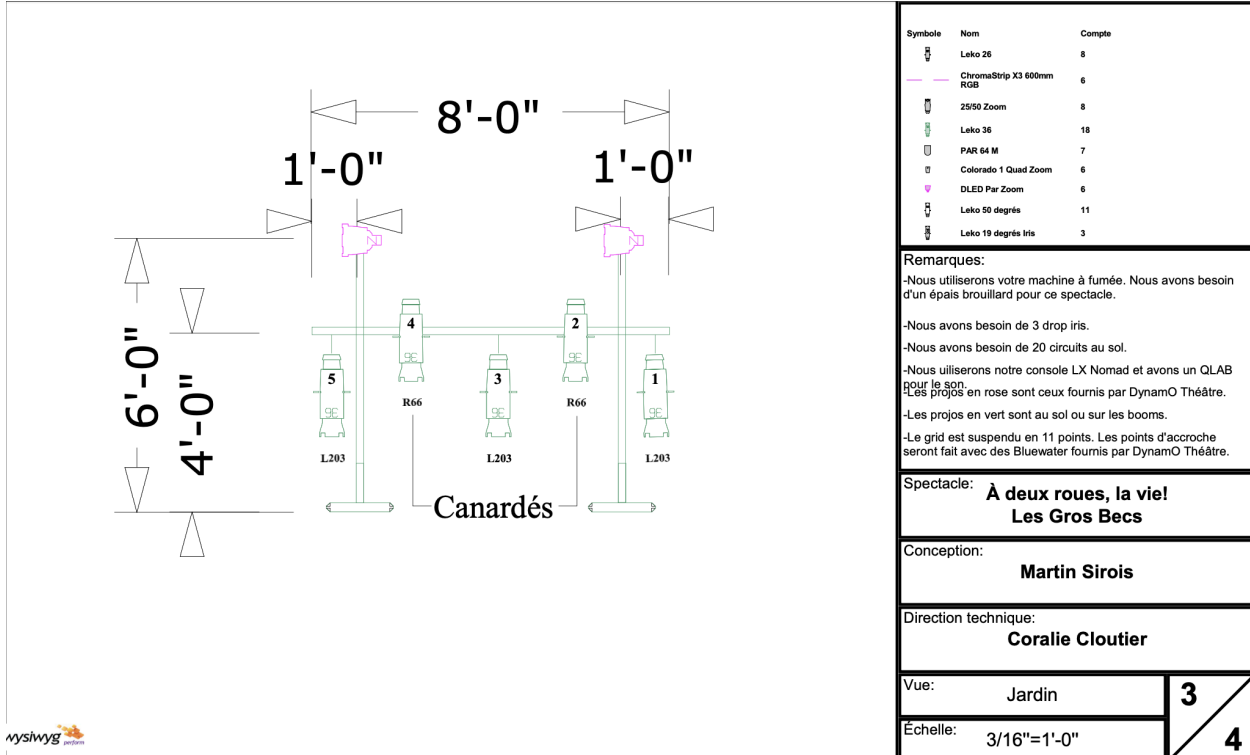
If there is no loading dock or convenient access to the stage, please allow one (1) hour for unloading. With adequate access, it should take about thirty (30) minutes.

G) Viewing angle

****TO BE VALIDATED WITH THE TECHNICAL DIRECTOR**** Seats may have to be cut to the side to ensure the quality of the show for all spectators. If this is the case, please inform the box office as soon as possible.







wysiwyg

