

DynamO Theatre - *I on the sky*

TECHNICAL SPECIFICATIONS AND INFORMATION

(Updated: May 11, 2011)

TYPE OF PRODUCTION:	Theatre of acrobatic movement
TYPE OF VENUE:	Theatre, auditorium
RUNNING TIME:	55 minutes
AUDIENCE:	350
AGE RANGE:	Families and children 10 years and up
CAST AND CREW:	5 performers et 2 technicians

THE PRESENTER HEREBY UNDERTAKES AND AGREES AS FOLLOWS:

1. To ensure that someone in charge (presenter's technical representative) is on hand in the venue at all times;
2. To provide a well-built and leveled stage measuring:
Large stage: 8.5m (28') wide by 8.8m (29') deep and 4.5m (15') high (overhead clearance)
Small stage: 7.9m (26') wide by 8.8m (29') deep and 4.3m (14') high (overhead clearance)
3. To provide five (5) stagehands during unloading, loading, set-up and strike of the set. One (1) sound technician, two (2) lighting technicians and two (2) stagehands are required. Please note that tasks may change depending on production needs;
4. To provide a minimum of six (6) hours (depending on the type of venue and the crew) to unload, put up the set, hang and focus lights and set sound levels;
5. To provide two (2) hours for showcall, which includes the warm-up period before each performance;
6. To provide two hours and a half (2 1/2) for load-in and strike after the performance. Please advise us if there are problems related to stage access;
7. To provide sound and lighting equipment (see enclosed list and light plans);
8. To provide clean heated dressing rooms for seven (7) individuals, with mirrors, toilets, running water and showers, near the stage;
9. To provide performers with bottled water (2 liters per person per day) and cold drinks (juice);
10. To provide parking space for one truck and one car;
11. To provide venue grid and floor plans when the agreement is signed (i.e. at least 12 weeks before first performance).

TECHNICAL INFORMATION

Lighting

The company requires an **ETC express 48/96** board. The company can provide a **Strand series 300** lighting board, which uses the DMX signal protocol and has a universal interface.

The company provides all gels, the venue provides the spotlights.

Required lighting equipment for our production is as follows:

- 44 2.4kw dimmers
- 15 25/50 degree ellipsoidal spotlights
- 3 PAR 64 Wide
- 16 miscellaneous ellipsoidal spotlights
- 16 fresnels 1k
- 12 gobo frames for the 25/50 degree gobos

Note: A pre-hanging may be required if the set-up and performance are on the same day.

The company brings and uses a strobe light during the performance.

Sound

The company provides its sound card with the needed cables. The performance will be run with a computer also provided by the company.

Sound equipment provided by the venue: the company needs one 3-way (professional) sound system and two stage monitors. A board with 4 subgroups is required in the stage management booth.

Video

The company provides a video projector, a 5.5 m (18') high by 2.75 m (9') wide screen and the required cabling - 200' (61m) long.

Stage management

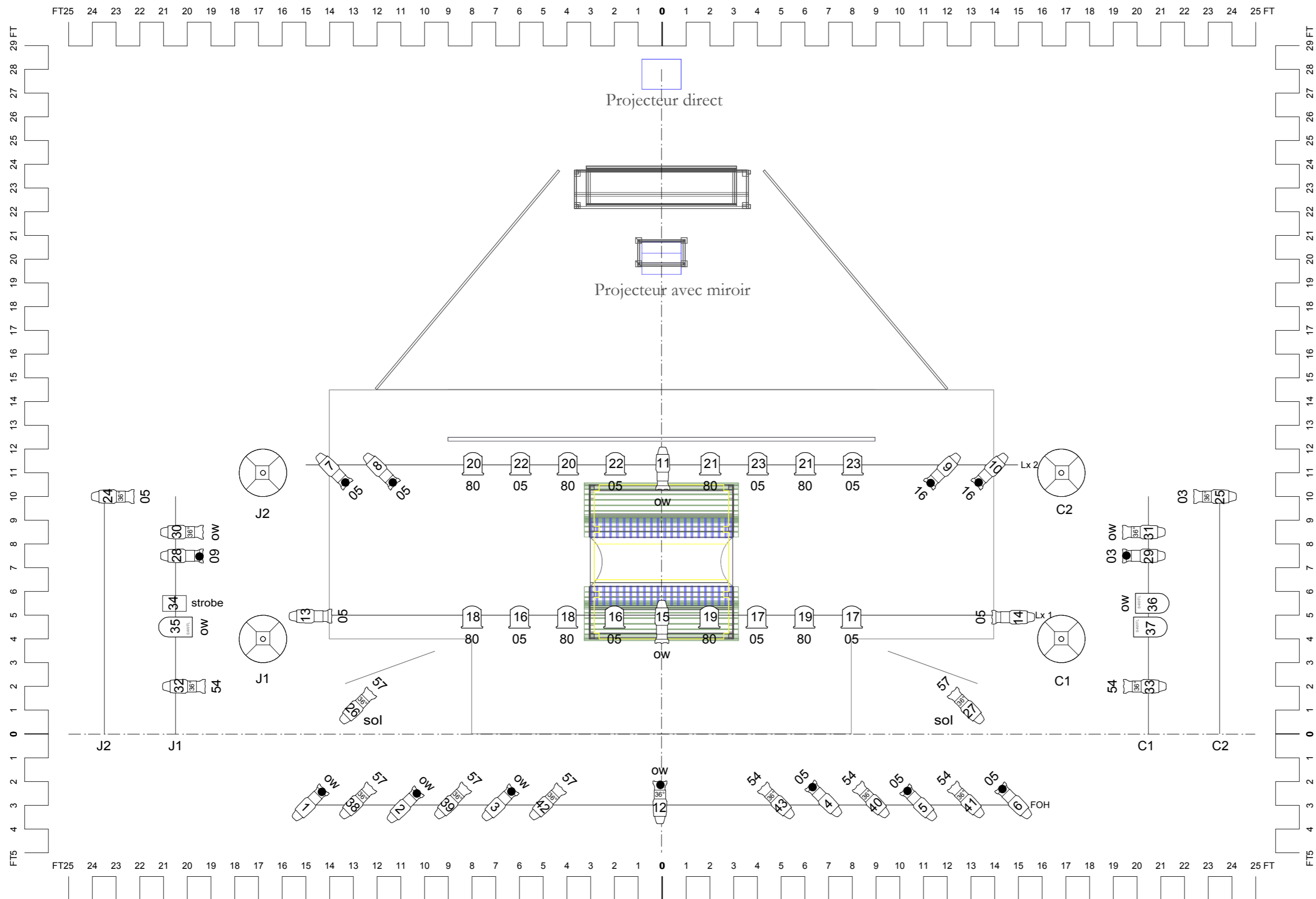
Stage management must be able to run the performance from its position in the audience. The stage manager will be operating the computer, the lighting and sound boards. An L shaped 2m x 1m (6' x 4') table is needed.





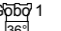
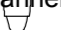
Trim

Black velvet, proscenium theatre.

Unloading

Large set pieces are up to 2.75m (9') long by 1m (3') wide and 15cm (6") high. If there is no loading dock or easy access to the stage, there needs to be one (1) additional hour to unload the set. With adequate access, only thirty (30) minutes are needed.



Instruments		Num In Inventory	Used	Remaining
	Source 4 36deg	15	15	0
	Source 4 Zoom 25°-50°	16	16	0
	8" Fres	16	16	0
	PAR 64 WFL	3	3	0
Accessories		Num In Inventory	Used	Remaining
Legend				
<p>Color</p>  <p>Channel</p> 				

Devant moi, le ciel
 Dynamo Théâtre
 Plantation éclairage et décor
 éclairage: Sylvain Letendre