

DynamO Théâtre – Edgewalkers

TECHNICAL SPECIFICATIONS AND INFORMATION *(Updated: 2017-02-21)*

TYPE OF PRODUCTION:	Theatre of acrobatic movement
TYPE OF VENUE:	Theatre, auditorium
RUNNING TIME:	60 minutes
MAXIMUM AUDIENCE:	350 people
AUDIENCE:	Families and children 10 years and up
CAST AND CREW:	5 performers and 2 technicians

THE PRESENTER HEREBY UNDERTAKES AND AGREES AS FOLLOWS:

1. To ensure that someone in charge (presenter's technical representative) is on hand in the venue at all times;
2. To provide a well built and leveled stage measuring 8.5m (28') wide by 8.5m (28') deep and 5.48m (18') high (overhead clearance);
3. To provide five (5) stagehands to take part in unloading and loading as well as setting up and striking the set. Required staff includes one (1) sound technician, one (1) lighting technician and three (3) stagehands for the set. Please note that tasks may change depending on production needs;
4. To provide a minimum of seven (7) hours (depending on the type of venue and the crew) to unload, put up the set, hang and focus lights and set sound levels;
5. To provide two (2) hours for show call, which includes the warm-up period before each performance;
6. To provide two hours (2) for striking the set and loading in after the performance. Please advise us if there are problems related to stage access;
7. To provide sound and lighting equipment (see enclosed list of required equipment and light plan);
8. To provide clean heated dressing rooms for seven (7) individuals, with mirrors, toilets, running water and showers, near the stage;
9. To provide performers with bottled water (2 liters per person per day) and cold drinks (juice);
10. To provide parking space for one truck and one car;
11. To provide venue grid and floor plan at the signature of the contract (at least twelve (12) weeks prior the first performance)

TECHNICAL INFORMATION

Lighting

The company requires an **ETC express 48/96** board. The company can provide a **Strand series 300** lighting board, which uses the DMX signal protocol and has a universal interface.

The company provides all gels, the venue provides the spotlights.

Required lighting equipment for the production is as follows:

- 48 2.4kw dimmers
- 18 1K fresnels
- 6 PAR 64 medium
- 11 Source 4 Zoom 15-30
- 11 Source 4 Zoom 25-50
- 8 PAR Wide
- 1 DMX line

Notes: A pre-hanging may be required if the set-up and performance are on the same day.
The company provides zip strips and all LED material.
A DMX line is required in the set, up-stage left.

Sound

Sound equipment provided by the venue:

- a one 3-way (professional) sound system and t
- wo stage monitors on stage (down-stage right and up-stage left)
- 1 CD player auto-cue
- 1 professional board with subgroups.
- 2 passive D.I

Stage management

Stage management must be able to run the performance from its position in the audience. The stage manager will be operating the CD deck as well as the lighting and sound boards. An L shaped 2m x 1m (6' x 4') table is needed. An intercom system must be set up between the backstage area and the stage management booth.

Trim

Black velvet, proscenium theatre

Unloading

Some set pieces are up to 2.45m (8') long by 90cm (3') wide and 1.85m (6') high. If there is no loading dock or easy access to the stage, there needs to be one (1) hour to unload the set. With adequate access, only twenty (20) minutes are needed.

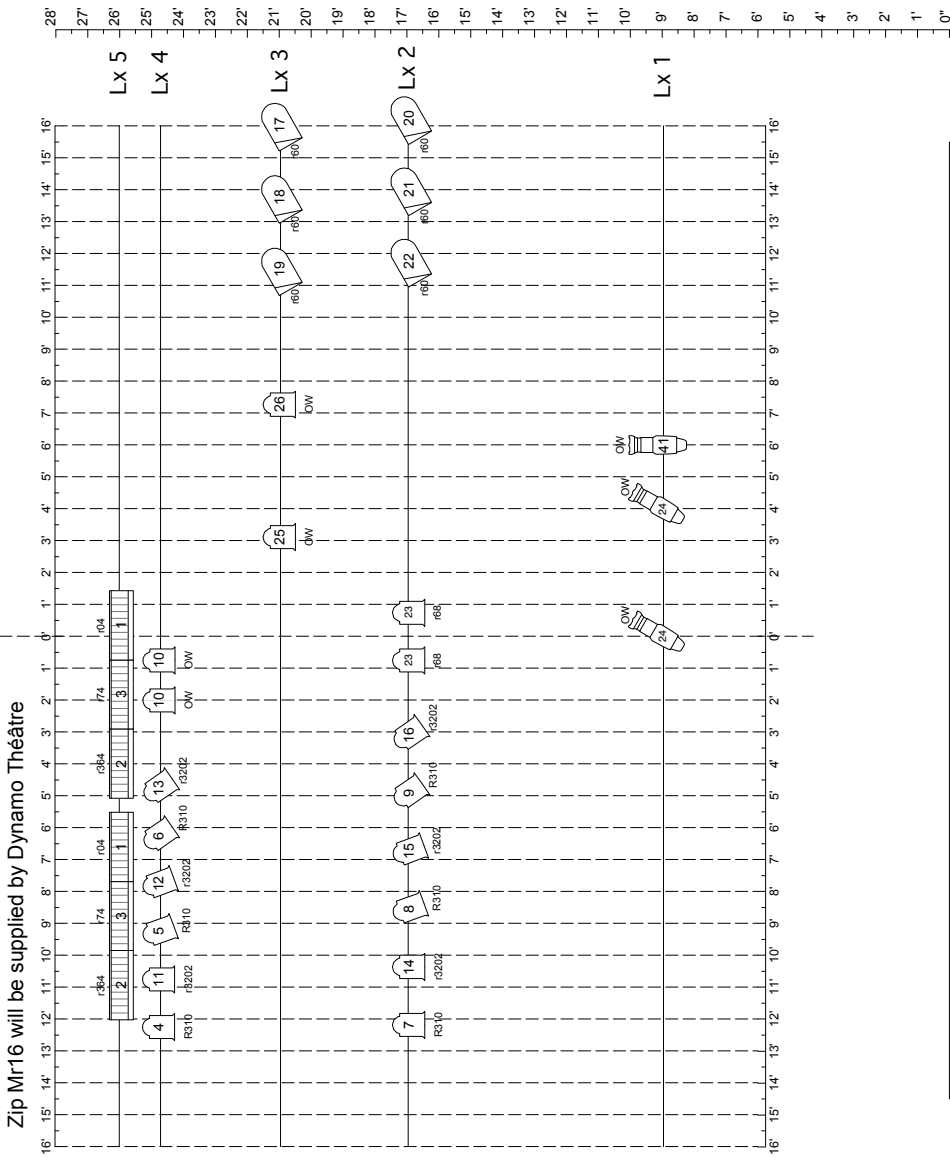
Typical Schedule (with pre-hang)

9:00 a.m. Unload truck
Mark set and trim
Begin focus
Put up set
Set up booms and circuits on stage

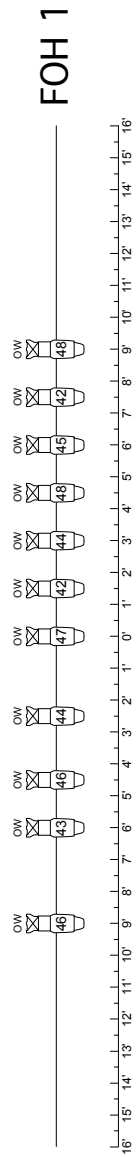
12:00 *Lunch*

1:00 p.m. Finish focus
Finish putting up set
Set up the stage management booth (sound and lights)
Put up set elements
Focus FOH lights
Set lighting levels
Clean up stage and backstage

5:00 p.m. *End of call*



Stage edge



NOUS SOMMES 1000...
 DYNAMO THÉÂTRE
 September 20th 2013
 ON THE ROAD
 LIGHTING PLOT
 Scale 1/4"=1'
 Luc Prairie

Instruments	Num In Inventory	Used	Remaining
Allman Zip Strip Cell	2	2	0
Allman Zip Strip Cell	2	2	0
Allman Zip Strip Cell	2	2	0
6" Fresnelle	34	18	16
PAR 64-MFL	24	6	18
Source 4 Zoom 15°-30°	22	11	11
Source 4 Zoom 23°-50°	16	11	5
Ampoule	2	2	0
Led B	5	5	0
LED G	5	5	0
LED R	5	5	0
LED 7w	10	10	0
S4 PAR WFL	12	8	4
Accessories			
	Num In Inventory	Used	Remaining
Legend			
Central Dimmer			

NOUS SOMMES 1000....
 DYNAMO THÉÂTRE
 September 20th 2013
 ON THE ROAD
 BOOMS+Lights in the set
 Scale 1/4"=1'
 Luc Prairite

